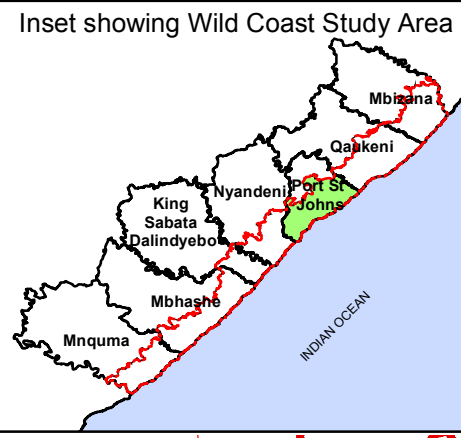
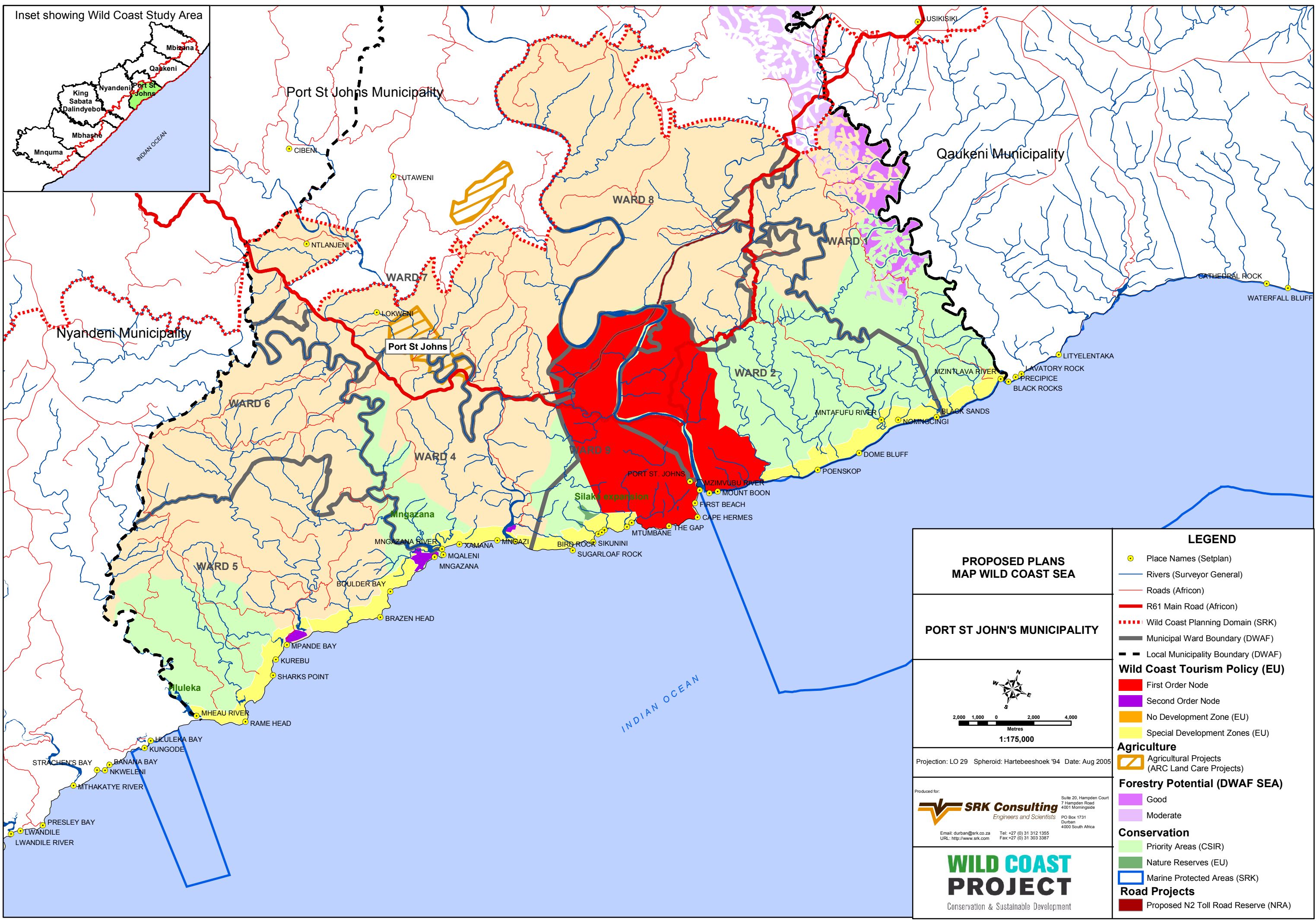


**PLAN 15: WILD COAST STRATEGIC ENVIRONMENTAL  
ASSESSMENT: PORT ST JOHNS**

---



<b>PROPOSED PLANS MAP WILD COAST SEA</b>	
<b>PORT ST JOHN'S MUNICIPALITY</b>	
 <b>1:175,000</b>	
Projection: LO 29 Spheroid: Hartebeeshoek '94 Date: Aug 2005	
Produced for:  <b>SRK Consulting</b> Engineers and Scientists Suite 20, Hampden Court 7 Hampden Road 4001 Morningside PO Box 1731 Durban 4000 South Africa Email: durban@srk.co.za Tel: +27 (0) 31 312 1355 URL: http://www.srk.com Fax: +27 (0) 31 303 3387	
<b>WILD COAST PROJECT</b> Conservation & Sustainable Development	
<b>LEGEND</b> <ul style="list-style-type: none"> <li> Place Names (Setplan)</li> <li> Rivers (Surveyor General)</li> <li> Roads (Africon)</li> <li> R61 Main Road (Africon)</li> <li> Wild Coast Planning Domain (SRK)</li> <li> Municipal Ward Boundary (DWAF)</li> <li> Local Municipality Boundary (DWAF)</li> <li><b>Wild Coast Tourism Policy (EU)</b></li> <li> First Order Node</li> <li> Second Order Node</li> <li> No Development Zone (EU)</li> <li> Special Development Zones (EU)</li> <li><b>Agriculture</b></li> <li> Agricultural Projects (ARC Land Care Projects)</li> <li><b>Forestry Potential (DWAF SEA)</b></li> <li> Good</li> <li> Moderate</li> <li><b>Conservation</b></li> <li> Priority Areas (CSIR)</li> <li> Nature Reserves (EU)</li> <li> Marine Protected Areas (SRK)</li> <li><b>Road Projects</b></li> <li> Proposed N2 Toll Road Reserve (NRA)</li> </ul>	