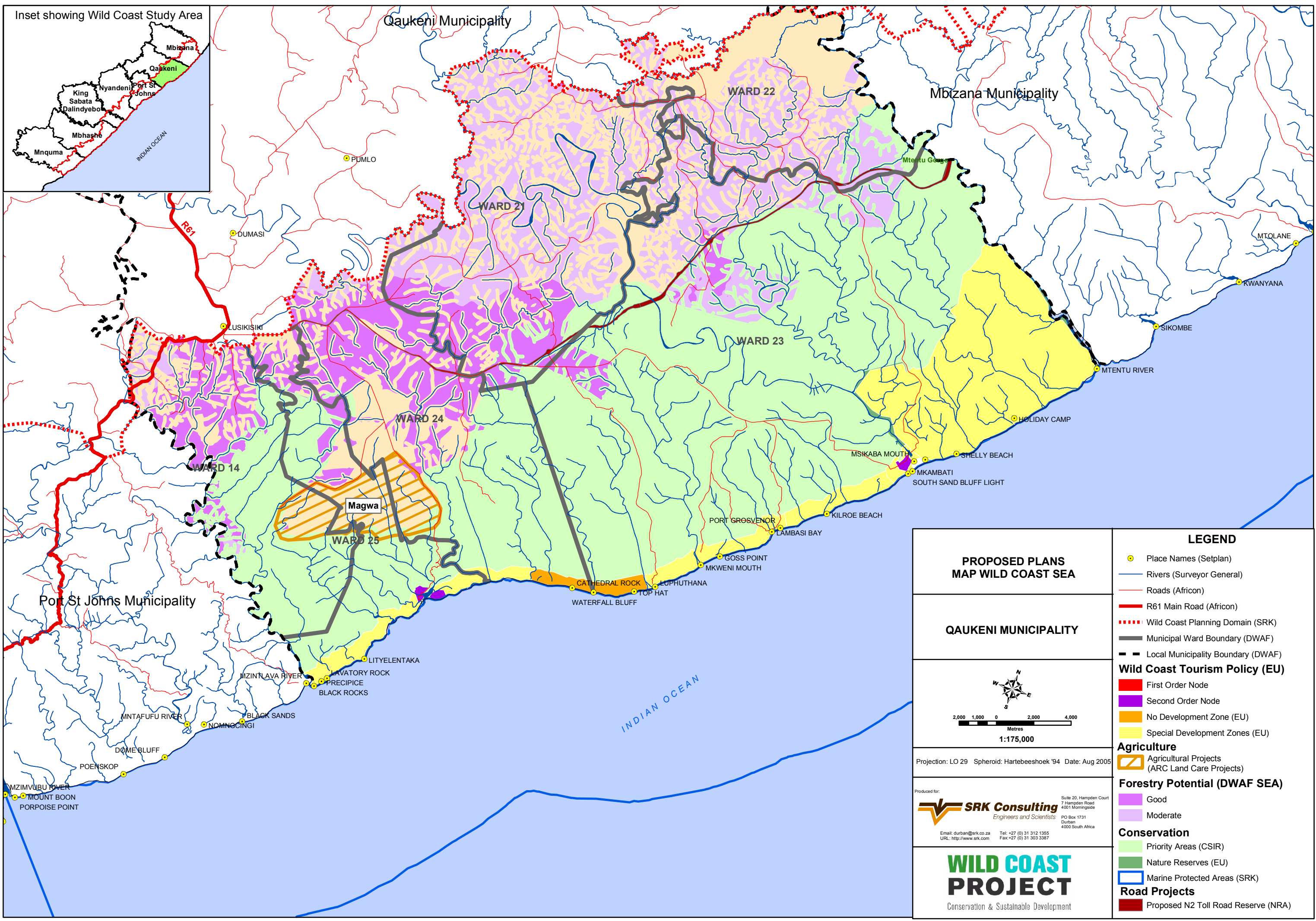
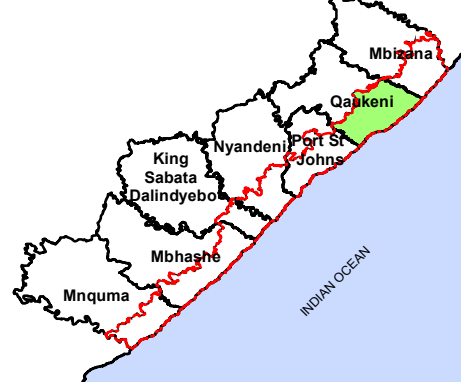


**PLAN 16: WILD COAST STRATEGIC ENVIRONMENTAL
ASSESSMENT: QAUKENI**



Inset showing Wild Coast Study Area



Qaukeni Municipality

Mbizana Municipality

Port St Johns Municipality

WARD 22

WARD 21

WARD 23

WARD 24

WARD 14

WARD 25

Magwa

PORT GROSVENOR

GROSS POINT

MKWENI MOUTH

CATHEDRAL ROCK

WATERFALL BLUFF

LUPHUTHANA

TOP HAT

KILROE BEACH

MSIKABA MOUTH

MKAMBATI

SOUTH SAND BLUFF LIGHT

SHELLY BEACH

HOLIDAY CAMP

MTENTU RIVER

SIKOMBE

MTOLANE

KWANYANA

MNTAFUFU RIVER

POENSKOP

DOME BLUFF

MZIMVUBU RIVER

MOUNT BOON

PORPOISE POINT

MZINTLAVA RIVER

BLACK SANDS

NOMNGINGI

PRECIPICE

BLACK ROCKS

LAVATORY ROCK

LITYELENTAKA

INDIAN OCEAN

**PROPOSED PLANS
MAP WILD COAST SEA**

QAUKENI MUNICIPALITY



1:175,000

Projection: LO 29 Spheroid: Hartebeeshoek '94 Date: Aug 2005

Produced for:

SRK Consulting
Engineers and Scientists

Suite 20, Hampden Court
7 Hampden Road
4001 Morningside
PO Box 1731
Durban
4000 South Africa

Email: durban@srk.co.za Tel: +27 (0) 31 312 1355
URL: http://www.srk.com Fax: +27 (0) 31 303 3387

**WILD COAST
PROJECT**
Conservation & Sustainable Development

LEGEND

- Place Names (Setplan)
- Rivers (Surveyor General)
- Roads (Africon)
- R61 Main Road (Africon)
- Wild Coast Planning Domain (SRK)
- Municipal Ward Boundary (DWAF)
- Local Municipality Boundary (DWAF)
- Wild Coast Tourism Policy (EU)**
- First Order Node
- Second Order Node
- No Development Zone (EU)
- Special Development Zones (EU)
- Agriculture**
- Agricultural Projects (ARC Land Care Projects)
- Forestry Potential (DWAF SEA)**
- Good
- Moderate
- Conservation**
- Priority Areas (CSIR)
- Nature Reserves (EU)
- Marine Protected Areas (SRK)
- Road Projects**
- Proposed N2 Toll Road Reserve (NRA)