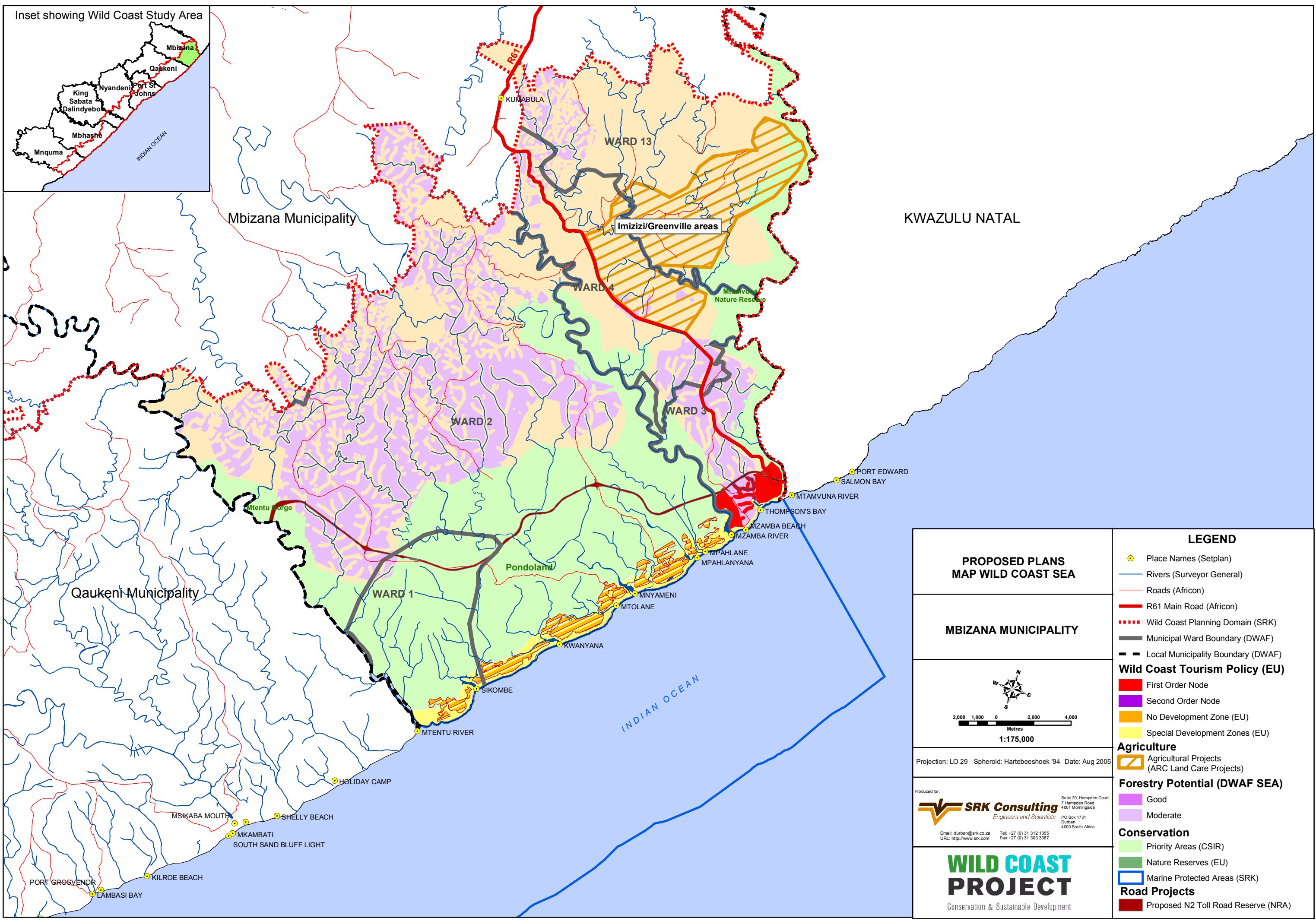
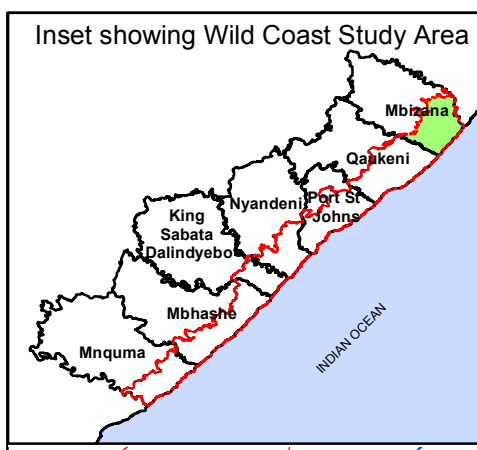


**PLAN 17: WILD COAST STRATEGIC ENVIRONMENTAL  
ASSESSMENT: MBIZANA**

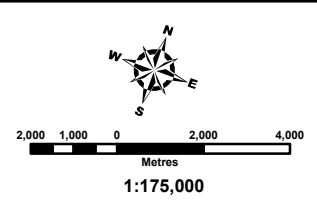
---



KWAZULU NATAL

**PROPOSED PLANS  
MAP WILD COAST SEA**

**MBIZANA MUNICIPALITY**



Projection: LO 29 Spheroid: Hartebeeshoek '94 Date: Aug 2005

Produced for:

**SRK Consulting**  
Engineers and Scientists

Suite 20, Hampden Court  
7 Hampden Road  
4001 Morningside  
PO Box 1731  
Durban  
4000 South Africa

Email: durban@srk.co.za Tel: +27 (0) 31 312 1355  
URL: http://www.srk.com Fax: +27 (0) 31 303 3387

**WILD COAST  
PROJECT**  
Conservation & Sustainable Development

**LEGEND**

- Place Names (Setplan)
- Rivers (Surveyor General)
- Roads (Africon)
- R61 Main Road (Africon)
- Wild Coast Planning Domain (SRK)
- Municipal Ward Boundary (DWAF)
- Local Municipality Boundary (DWAF)
- Wild Coast Tourism Policy (EU)**
- First Order Node
- Second Order Node
- No Development Zone (EU)
- Special Development Zones (EU)
- Agriculture**
- Agricultural Projects (ARC Land Care Projects)
- Forestry Potential (DWAF SEA)**
- Good
- Moderate
- Conservation**
- Priority Areas (CSIR)
- Nature Reserves (EU)
- Marine Protected Areas (SRK)
- Road Projects**
- Proposed N2 Toll Road Reserve (NRA)