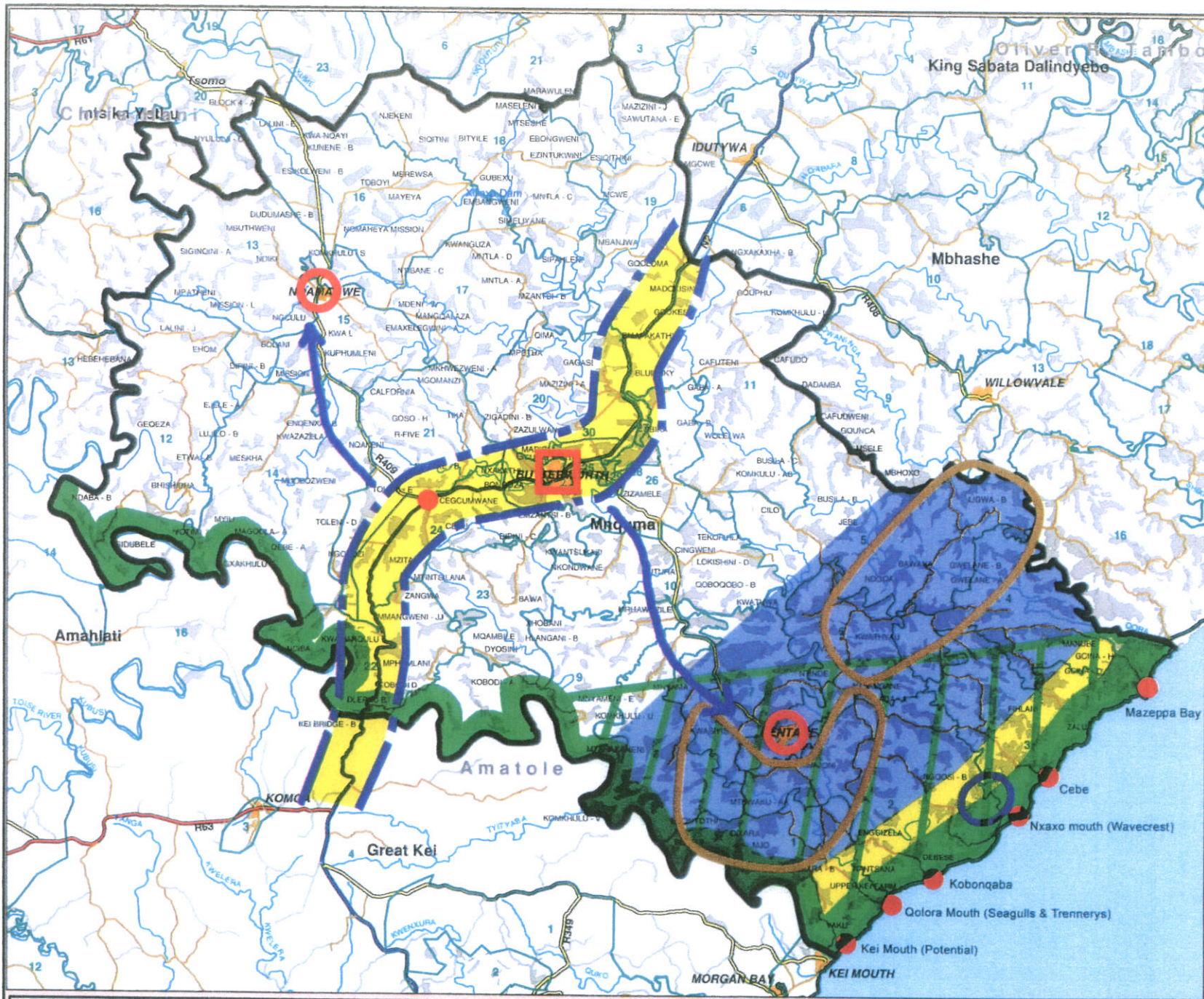


**PLAN 5(A): MNQUMA MUNICIPALITY SPATIAL DEVELOPMENT
FRAMEWORK: SPATIAL STRUCTURING ELEMENTS**



Client:
MNQUMA

SPATIAL STRUCTURING ELEMENTS

LEGEND

Roads

- National
- Trunk
- Main
- District
- Minor
- Access

River

Dam

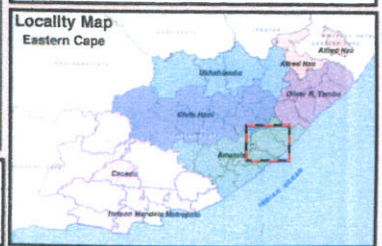
Villages

Towns

Wards

Municipality

- Primary Urban Node (Level 3)
- Minor Urban Node (Level 2)
- Minor Urban Node (Level 1)
- Conservation Area
- Tourism Regions
- Kentani / Wavecrest centre of Fauna Diversity
- Kentani Agricultural Project
- Potential Woodlot Areas
- EL / Umtata Railway Project
- Titanium Mining



Projection: Transverse Mercator LO27
Spheroid: WGS84
Date: June 2004
Reference: Y:\GIS\24518_GIS_Smallworks\R35_Mquma_Emalahleni\Mxds\Mquma_basemap_A3_ibm.mxd

