

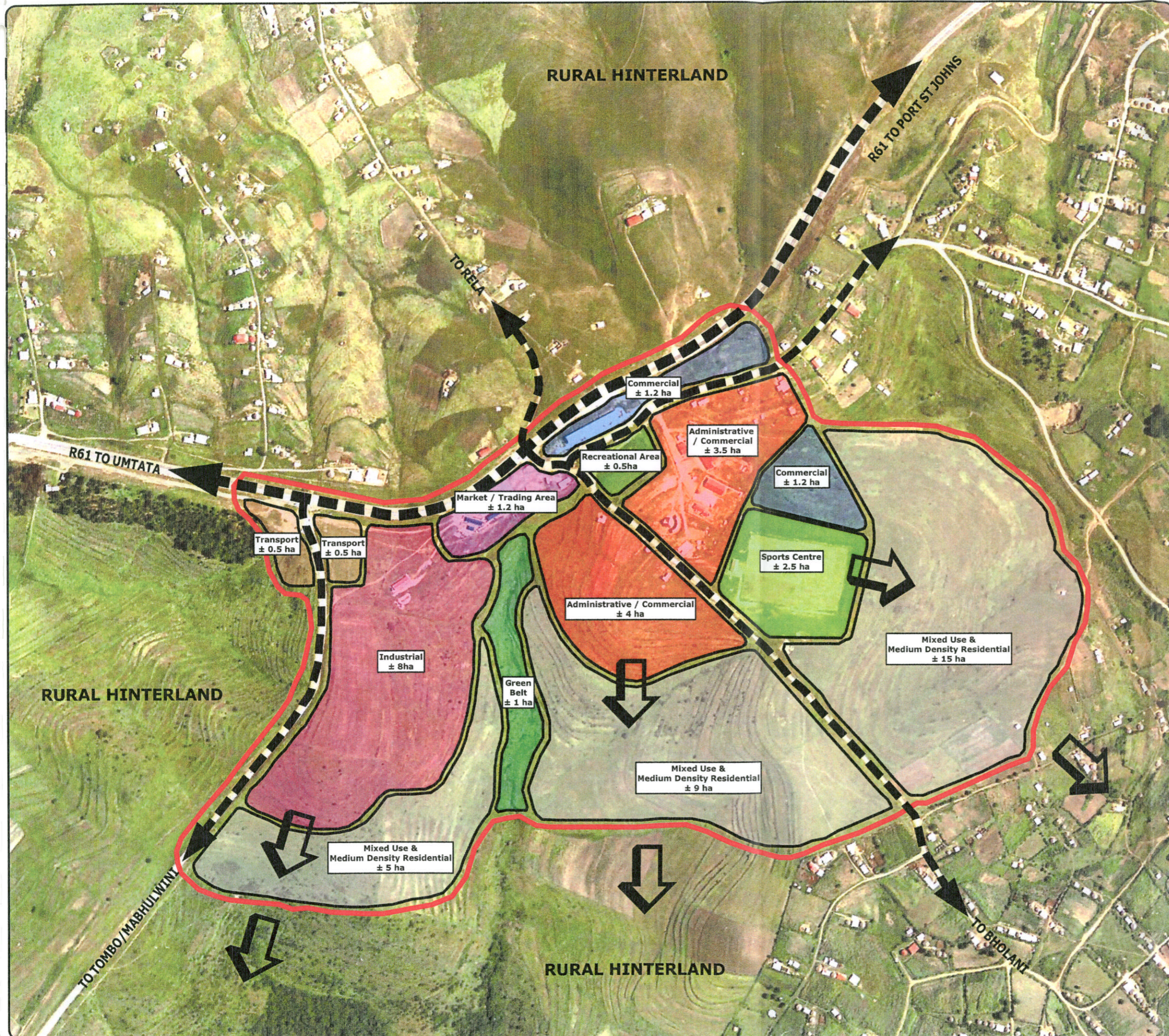
**PLAN 9(B): PORT ST JOHNS MUNICIPALITY SPATIAL
DEVELOPMENT FRAMEWORK:
TOMBO ADMINISTRATIVE NODE**

PORT ST JOHNS

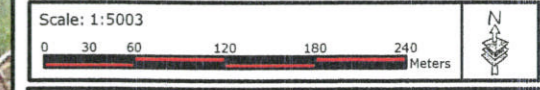
TOMBO PROPOSED ADMINISTRATIVE NODE

- Administrative / Commercial
- Commercial
- Market / Trading Area
- Sports Centre
- Recreational Area
- Green Belt
- Transport
- Mixed Use
- Industrial
- Urban Edge
(To be verified following detailed study)
- Regional Distributor (R61)
- Existing District Road
- Future Development

SPATIAL DEVELOPMENT FRAMEWORK PLAN



Date: September 2005
 Dir: D:\Data\GIS_Proj\SDFP\PSJ
 Drawn by: Stephen Canter



MAP NO.25