

**PLAN 9(C): PORT ST JOHNS MUNICIPALITY SPATIAL  
DEVELOPMENT FRAMEWORK: NTAFAFU  
ADMINISTRATIVE NODE**

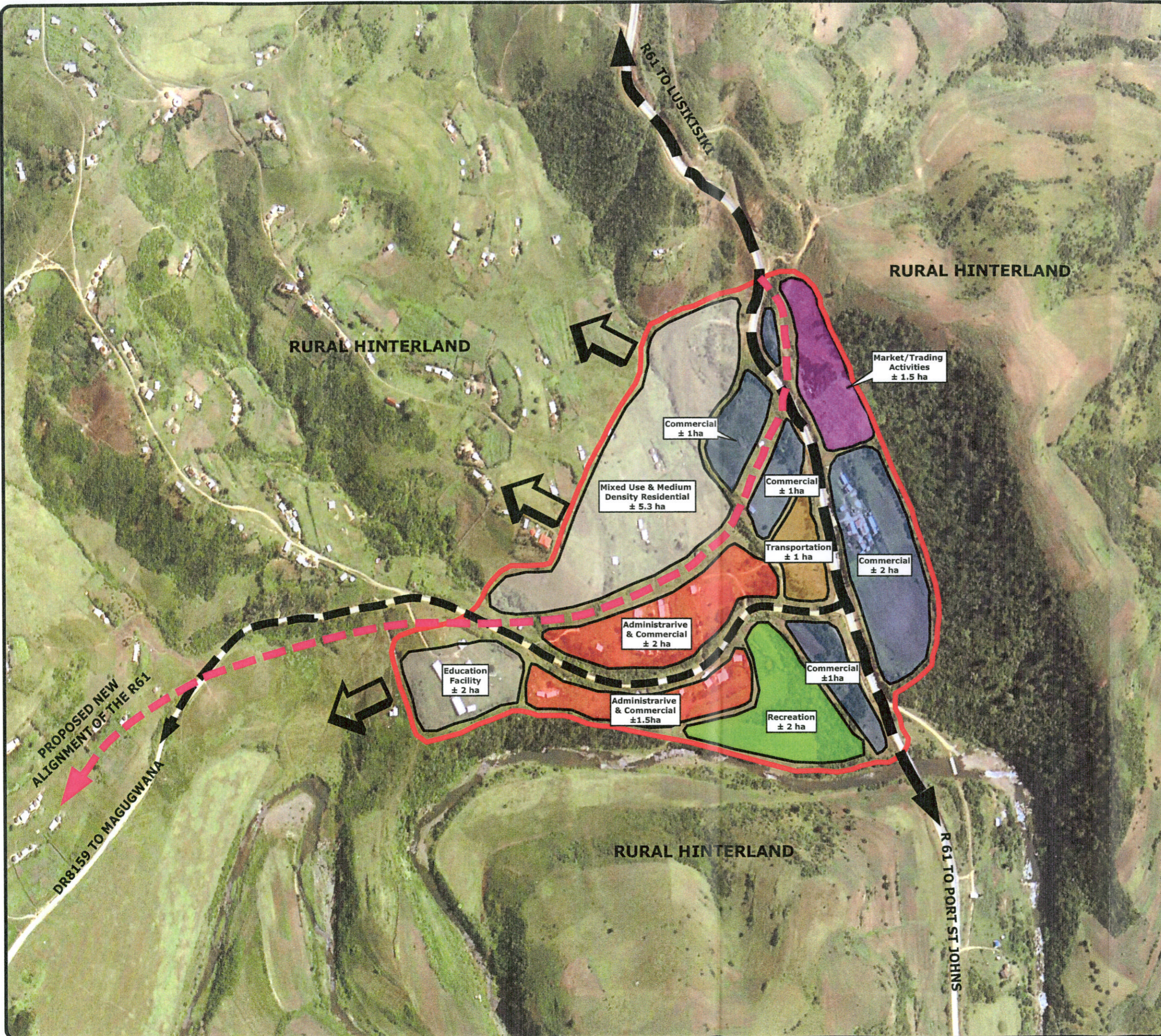
---

# PORT ST JOHNS

## NTAFUFU PROPOSED ADMINISTRATIVE NODE

- Administrative / Commercial
- Commercial
- Education Facility
- Market/Trading Activities
- Mixed Use
- Recreation
- Transport
- Urban Edge  
(To be verified following detailed study)
- Proposed R61 Realignment
- Existing Access Roads
- Future Development

**SPATIAL DEVELOPMENT FRAMEWORK PLAN**



Date: September 2005  
 Dir: D:\Data\GIS\_Proj\SDFP\PSJ  
 Drawn by: Stephen Canter



### MAP NO.26