

**PLAN 11: MBIZANA MUNICIPALITY  
SPATIAL DEVELOPMENT FRAMEWORK**

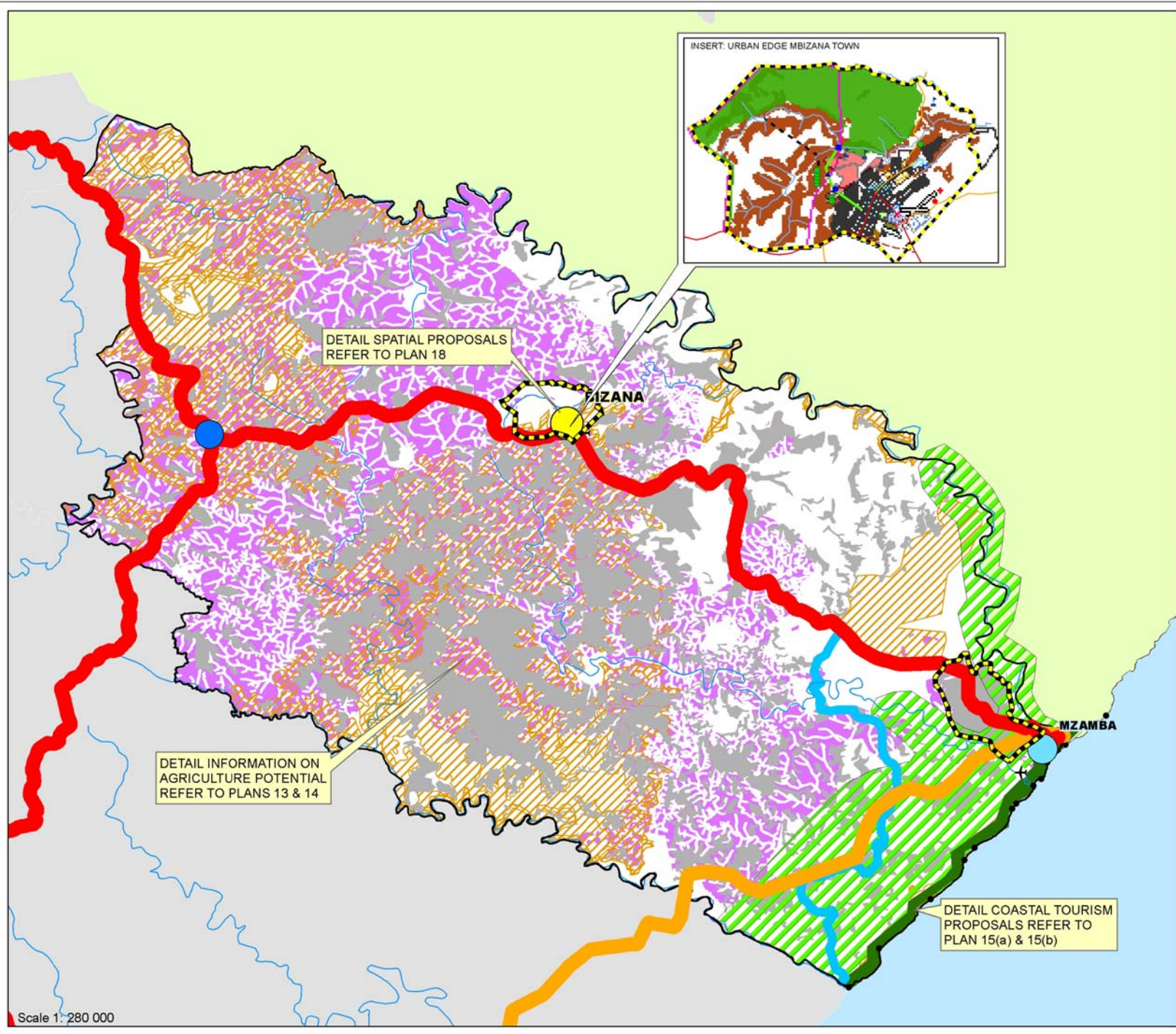
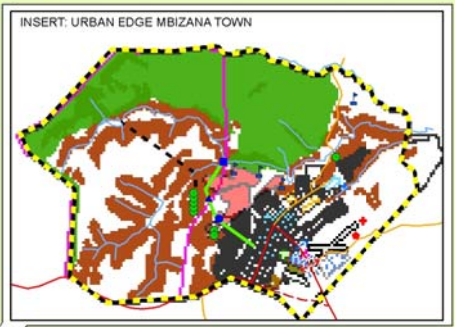
---

**MBIZANA LOCAL MUNICIPALITY**  
**Spatial Development Framework**

**PLAN 17: SDF PROPOSALS**

**Legend**

-  Primary Node
  -  Secondary Node
  -  Proposed Secondary Node
  -  Urban Edge
  -  Main Linkage Routes
  -  Important Future Linkage Route
  -  Secondary Linkage Route
- PRIORITY AREAS**
-  Priority Conservation/ Tourism Area
  -  Priority Conservation Area
  -  Agric.: Optimum Cond. (Various Crops)
  -  Forestry: Good & Moderate Potential
  -  Basic Needs: Rural Settlement Areas (Focus on consolidation, densification and social and infrastructure service delivery.)



DETAIL SPATIAL PROPOSALS REFER TO PLAN 18

DETAIL INFORMATION ON AGRICULTURE POTENTIAL REFER TO PLANS 13 & 14

DETAIL COASTAL TOURISM PROPOSALS REFER TO PLAN 15(a) & 15(b)

Scale 1: 280 000

Date: Feb 2005  
 Project Ref: j051  
 Ref: d/j051\_MbizanaSDF/Arc  
 Project/Overall Plan



PRODUCED FOR: MBIZANA LOCAL MUNICIPALITY

PRODUCED BY:  
 JONAS & ASSOCIATES  
 P.O. BOX 7609  
 EAST LONDON  
 5200



TEL: (043) 7437374  
 j.jonas1@freemail.absa.co.za

**Limits of Liability and Warranty Disclaimer**  
 Jonas & Associates makes no warranty of any kind, expressed or implied, with regard to the data illustrated, and shall not be liable in any event for any incident or consequential damage resulting from its use. The data remains the sole property of the client.